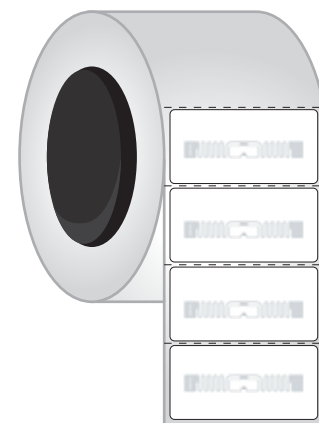
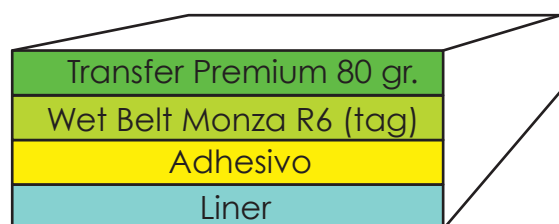
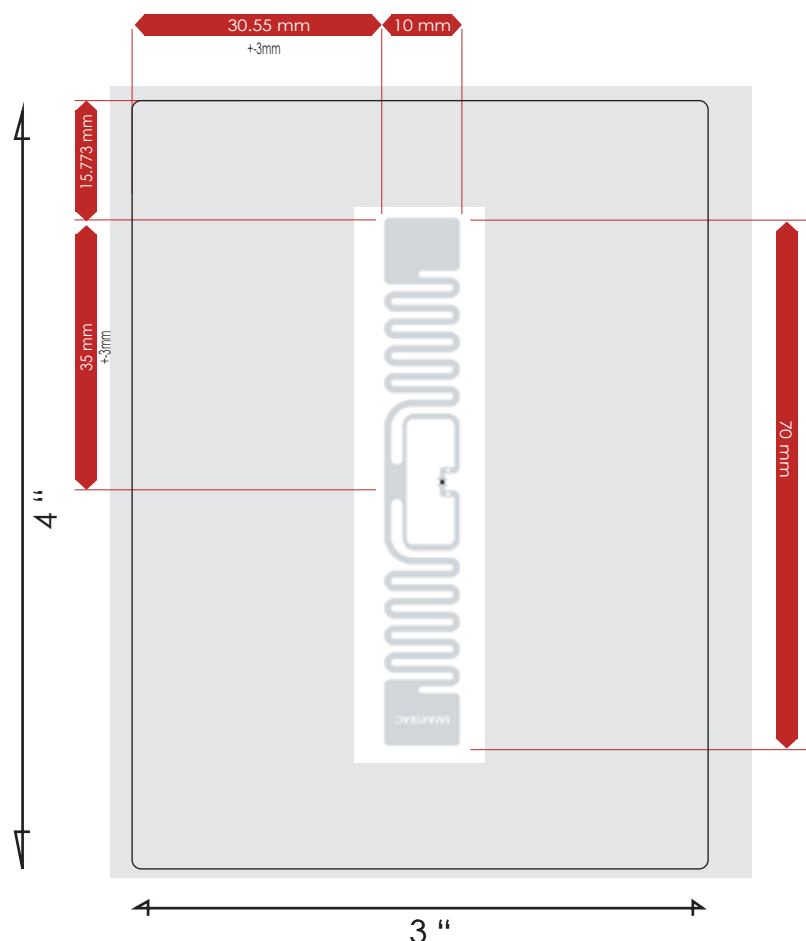


## ETIQUETA ADHESIVA

4" x 3"



SALIDA DE MATERIAL

### DESCRIPCION:

Etiqueta Adhesiva 4" x 3"      Corte Completo  
 Papel Transfer Premium 80 gr.  
 Liner white kraft 2.5 mil.  
 Tag: Smartrac Belt R6 EPC Gen2.  
 Bobina Centro 3"

### CARACTERISTICAS ELECTRICAS:

|                         |                                  |
|-------------------------|----------------------------------|
| Circuito Integrado (IC) | Impinj Belt Monza R6             |
| Protocolo de Interface  | EPC Class 1 Gen 2, ISO 18 000-6C |
| Frecuencia de Operación | 860 - 960 MHz                    |
| Memoria                 | 96 bit EPC                       |