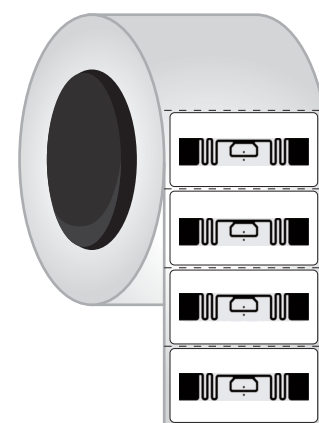
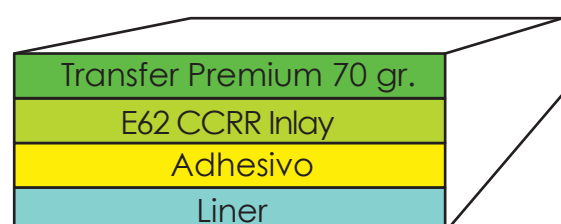
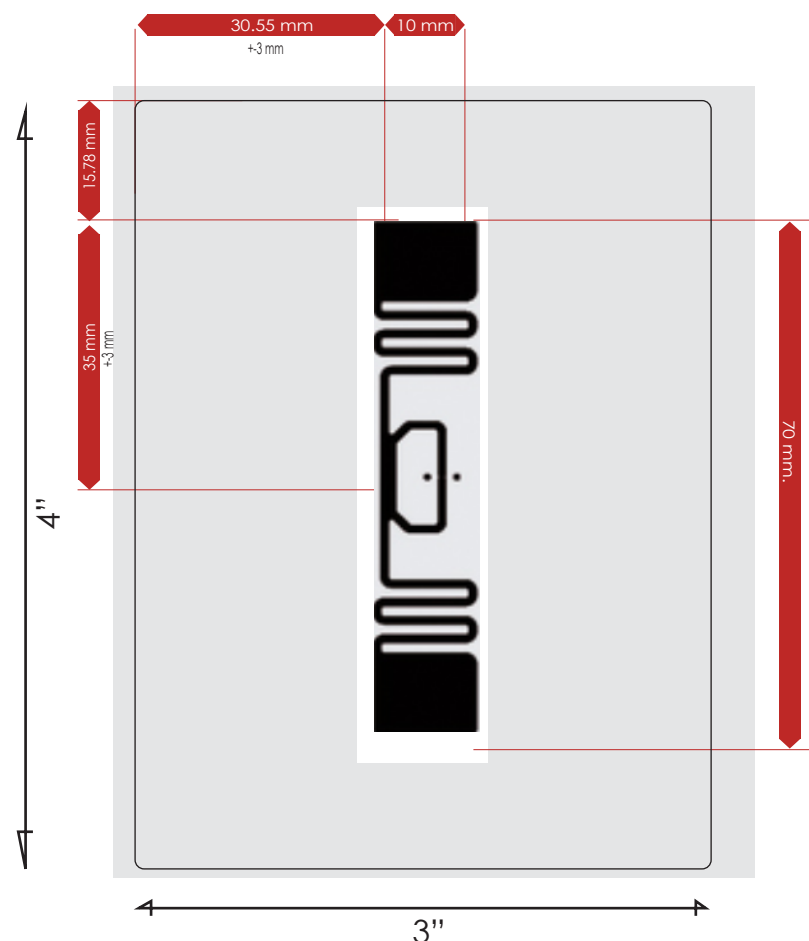


ETQUETA ADHESIVA 4" x 3" CCRR



Salida de Material

DESCRIPCIÓN:

Etiqueta Adhesiva 4" x 3" Corte Completo
 Papel Transfer Premium 70 Gr.
 Liner White Kraft 2.5 mil.
 Tag: CCRR E62, Impinj Monza R6
 Bobina 3"

CARACTERÍSTICAS ELÉCTRICAS

Circuito Integrado (IC)	Impinj Monza R6
Protocolo Interface	EPC Class1 Gen2, ISO 18000 6C
Frecuencia de Opoeración	860-960 MHZ
Memoria	96 Bit EPC